



August 3, 2017

TRANSPORTATION ADVISORY COMMITTEE (TAC)



AGENDA



- Welcome, Announcements
- Committee Report title and format discussion
- Review decisions from July meeting
- Decision on mode for Corridor 6
- Circulators and Multi-Modal Centers discussion
- Guiding Principles discussion
- Other Policy Considerations discussion
- Citizen Participation
- Last Meeting – September 7th
- Adjourn



TAC REPORT



Title Options

1. Move Arlington
2. Connect Arlington
3. Arlington Unbridled
4. Arlington In Motion

Tagline Options

1. A Flexible & Responsive Transportation System for Tomorrow
2. A Transportation Vision Connecting People & Places



TAC REPORT



Format and Content

- Committee Charge
- Target Populations
- Guiding Principles
- Other Policy Considerations
- Identification of Hubs, Corridors and Circulators
- Characteristics and modes for each corridor
- TAC members

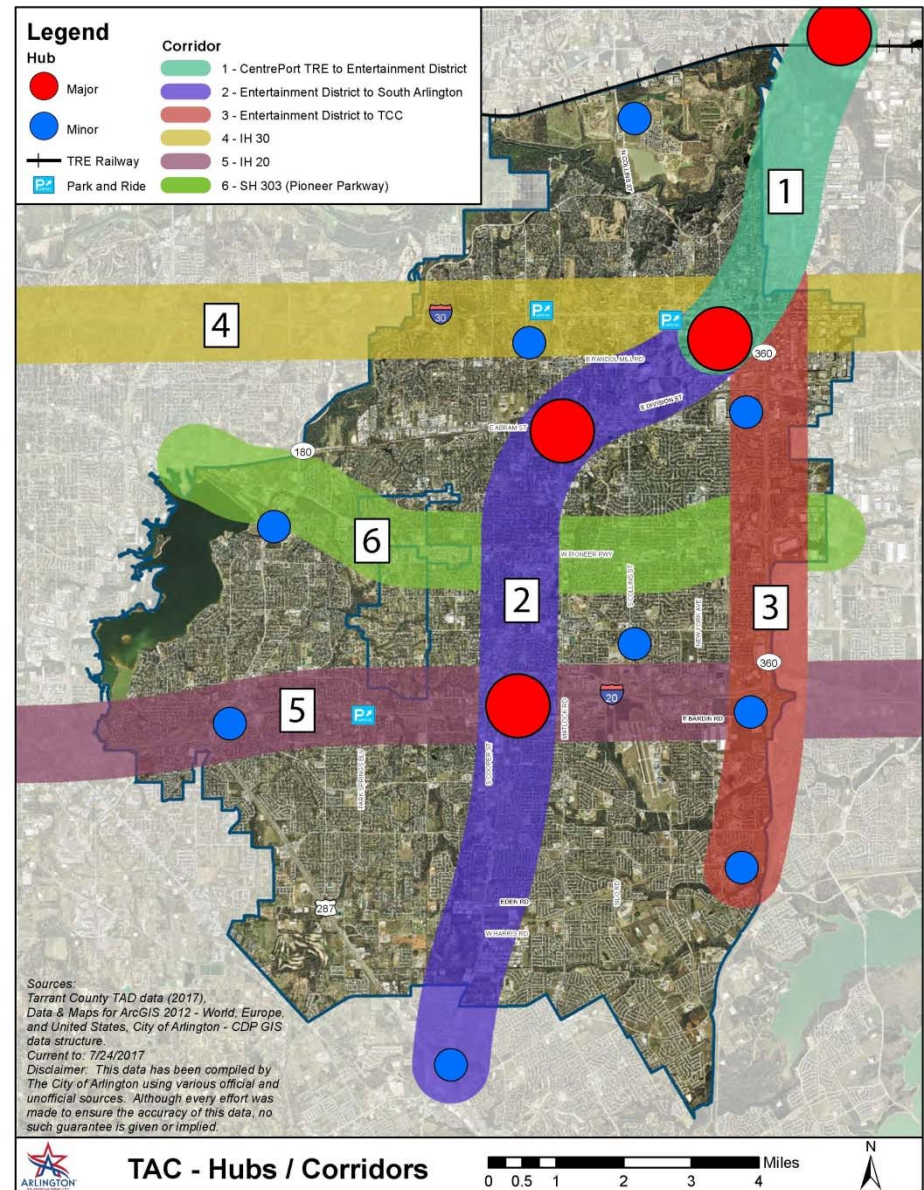


DECISIONS FROM JULY MEETING



TAC Consensus on:

- Hubs
- Corridors
- Modes and characteristics for Corridors 1-5



CORRIDOR 1 RECOMMENDATIONS



Characteristics:

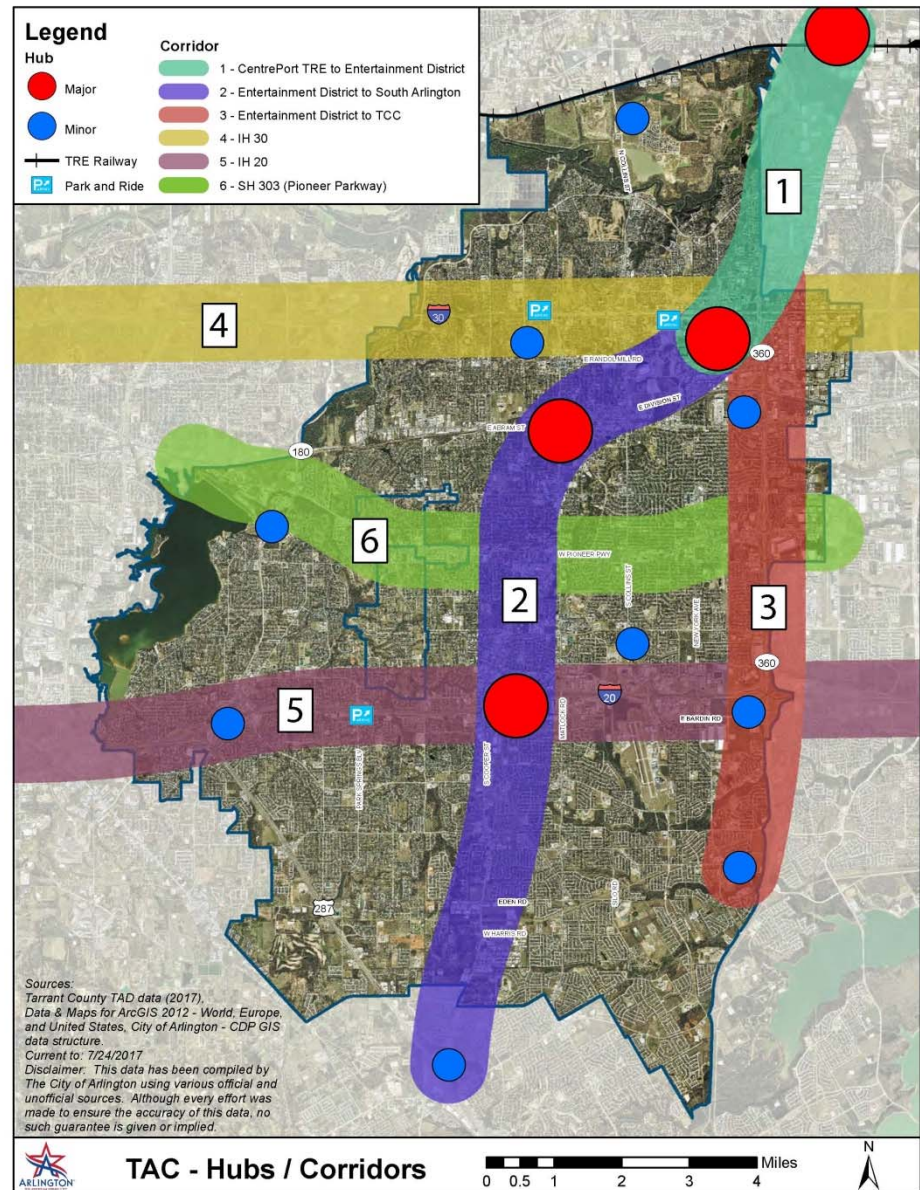
- Fixed Service
- Signature type of service
- Gateway to City
- High Frequency
- Serving visitors, employees, businesses and residents

Mid-term Recommendation:

- Demand Response Rideshare

Long-term Recommendation:

- Fixed service supported by citywide Rideshare
- Rubber-tired shuttle or Personal Rapid Transit using state of the art technology



CORRIDOR 2 RECOMMENDATIONS



Characteristics:

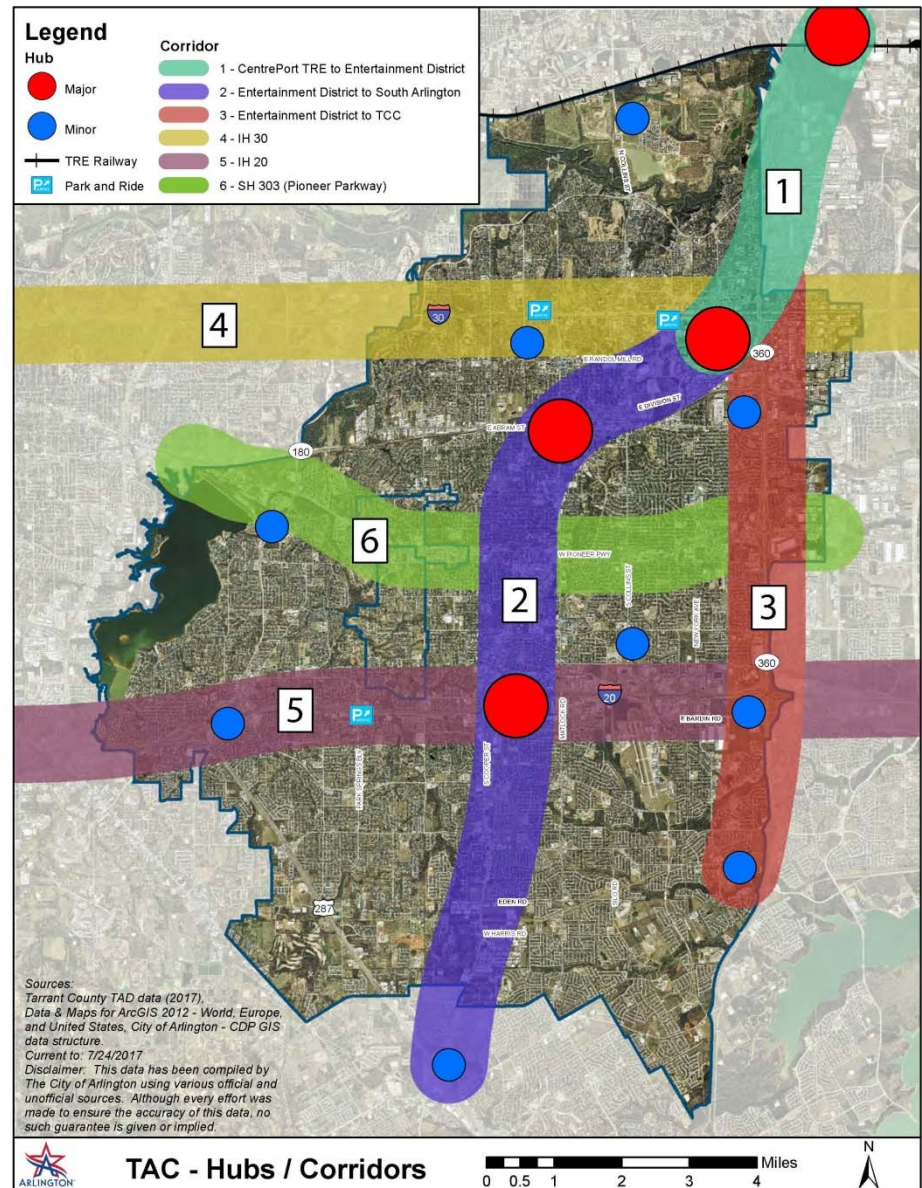
- Fixed Service
- Express or Local service based on demand
- Serving residents and some businesses and shoppers

Mid-term Recommendation:

- Demand Response Rideshare

Long-term Recommendation:

- Fixed service supported by citywide Rideshare
- Rubber-tired shuttle or Personal Rapid Transit



CORRIDOR 3 RECOMMENDATIONS



Characteristics:

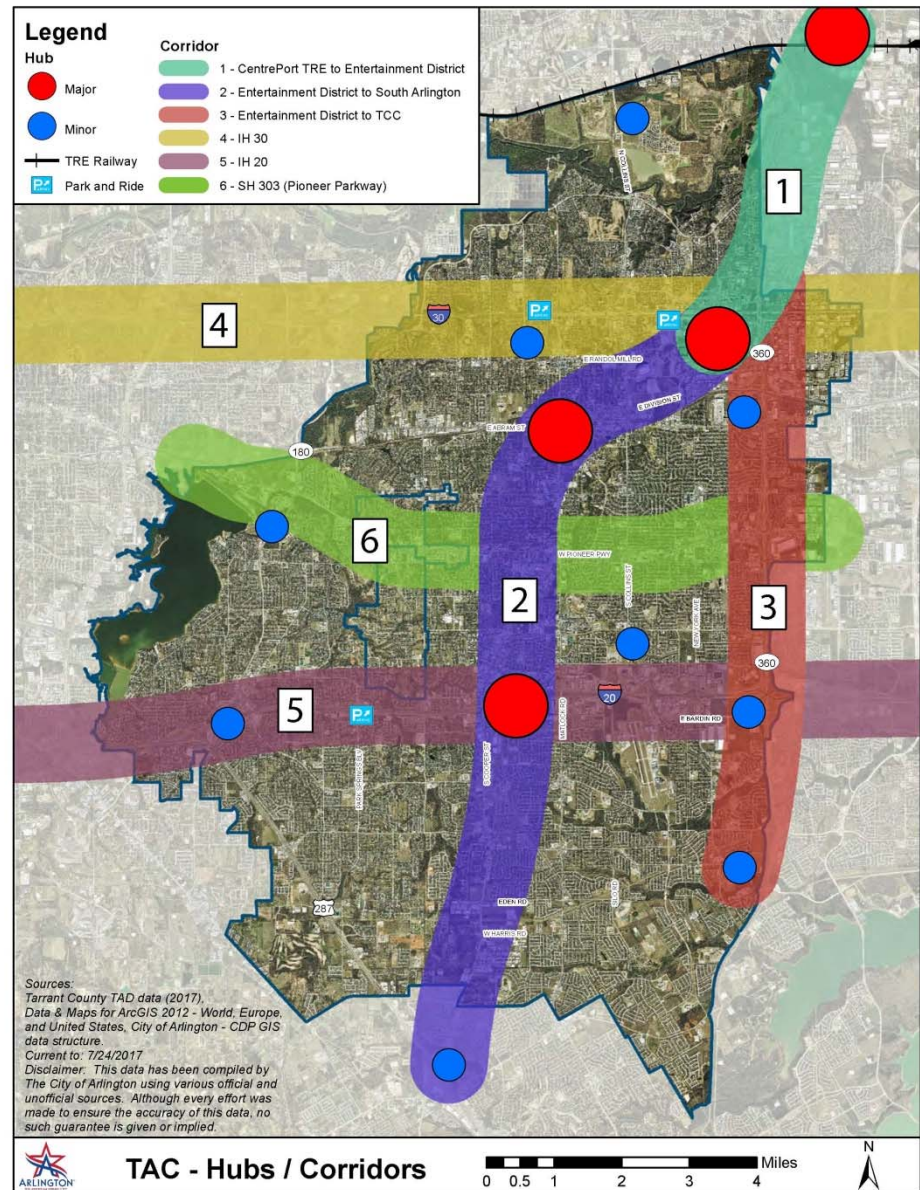
- Commuter Spine
- Minimal traffic impacts – elevated or grade-separated guideway
- Serving inter and intra travel focused on employees/commuters and education-based needs

Mid-term Recommendation:

- Demand Response Rideshare

Long-term Recommendation:

- Fixed service supported by citywide Rideshare
- Rubber-tired shuttle or Personal Rapid Transit



CORRIDOR 4 RECOMMENDATIONS



Characteristics:

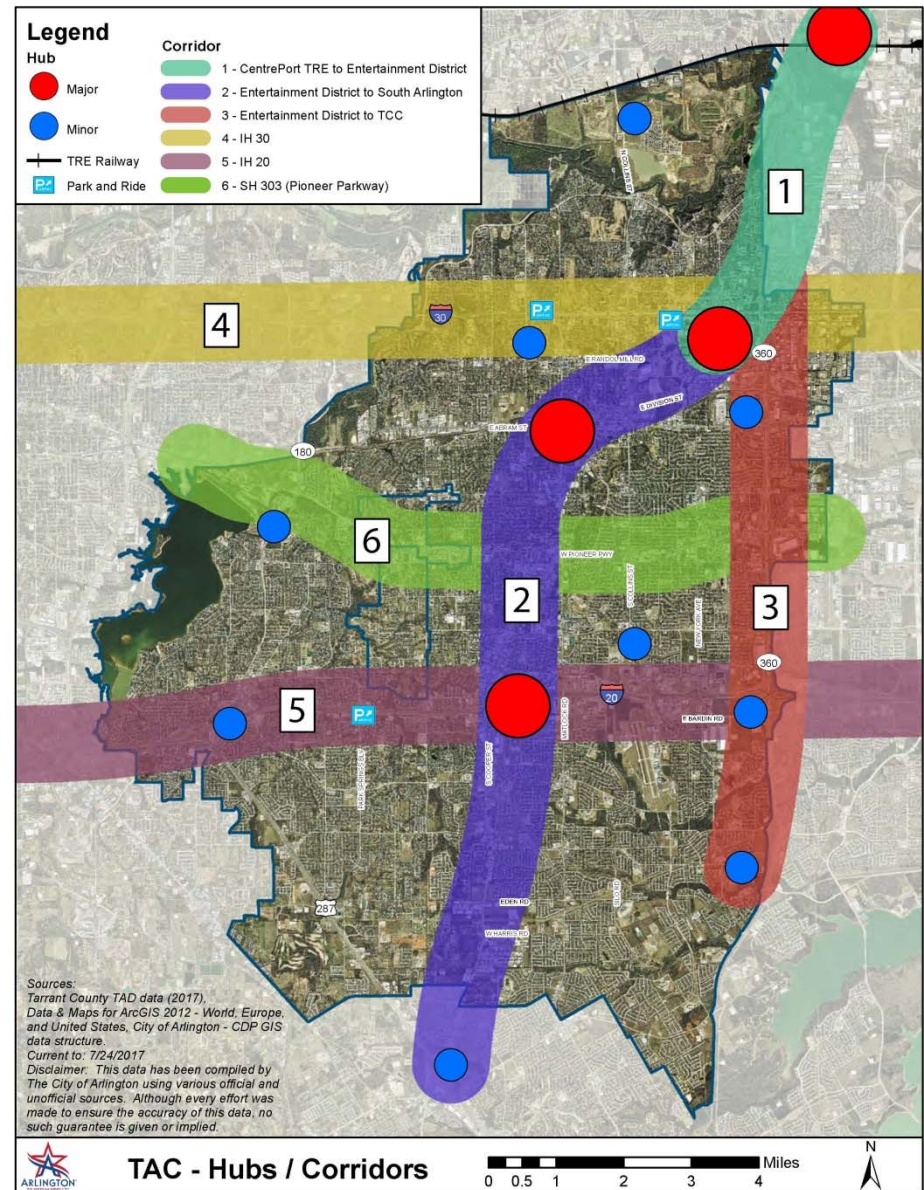
- Commuter Service
- Comfort
- Amenities
- Regional Connections
- Express Service
- Serving commuters to Fort Worth or Dallas and some tourists

Mid-term Recommendation:

- Bus Rapid Transit

Long-term Recommendation:

- Fixed Service
- High Speed Rail



CORRIDOR 5 RECOMMENDATIONS



Characteristics:

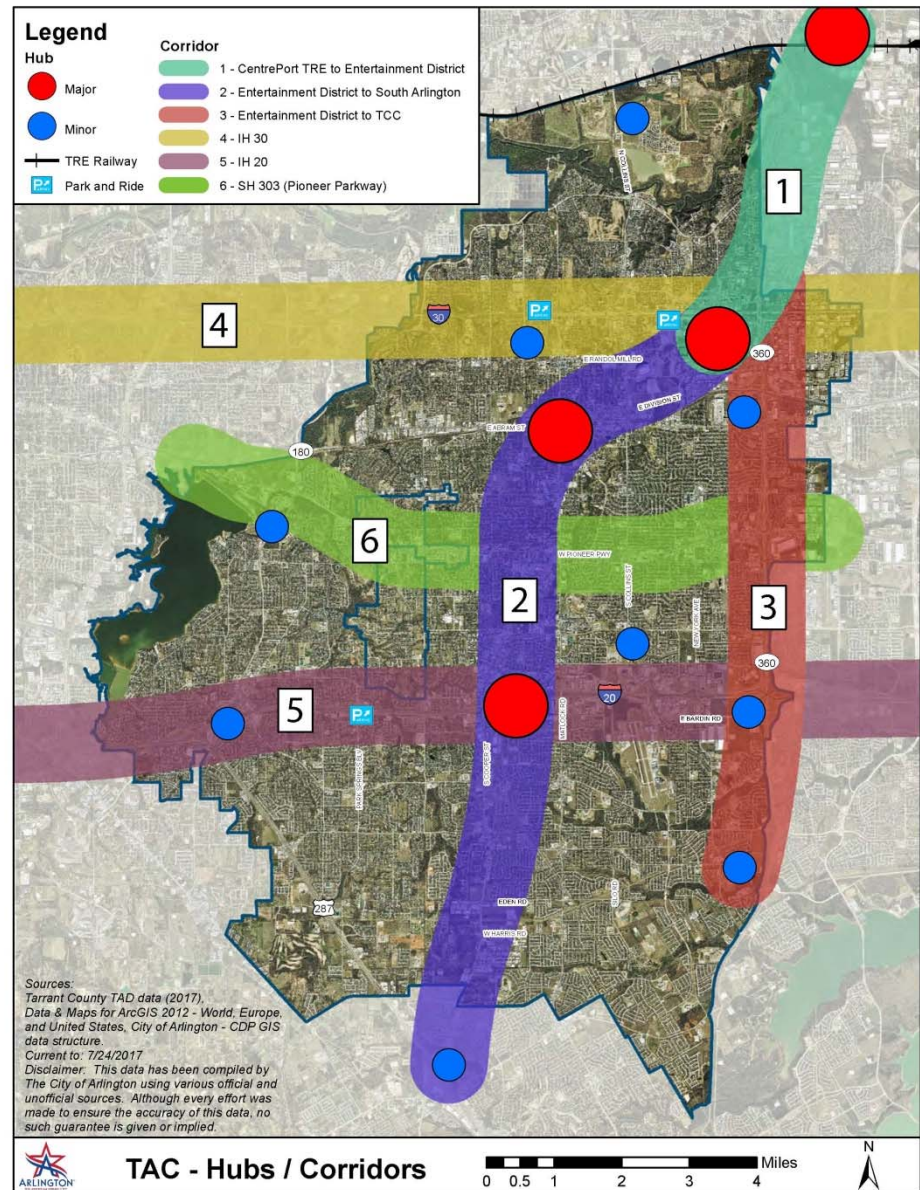
- Commuter Service
- Comfort
- Amenities
- Regional Connections
- Express Service
- Serving commuters and residents

Mid-term Recommendation:

- Bus Rapid Transit/High Intensity Bus

Long-term Recommendation:

- Fixed Service
- Bus Rapid Transit/High Intensity Bus



RECOMMENDATIONS



	Characteristics	Mid-Term	Long-Term
Corridor 1	<ul style="list-style-type: none"> • Fixed Service • Signature type of service • Gateway to City • High frequency 	<ul style="list-style-type: none"> • Demand Response Rideshare 	<ul style="list-style-type: none"> • Fixed Service supported by citywide Rideshare • Rubber-Tired Shuttle or Personal Rapid Transit
Corridor 2	<ul style="list-style-type: none"> • Fixed Service • Express or local service based on demand 	<ul style="list-style-type: none"> • Demand Response Rideshare 	<ul style="list-style-type: none"> • Fixed Service supported by citywide Rideshare • Rubber-Tired Shuttle or Personal Rapid Transit
Corridor 3	<ul style="list-style-type: none"> • Commuter spine • Elevated or grade-separated guideway 	<ul style="list-style-type: none"> • Demand Response Rideshare 	<ul style="list-style-type: none"> • Fixed Service supported by citywide Rideshare • Rubber-Tired Shuttle or Personal Rapid Transit
Corridor 4	<ul style="list-style-type: none"> • Commuter Service • Comfort • Amenities • Regional Connections • Express Service 	<ul style="list-style-type: none"> • Bus Rapid Transit 	<ul style="list-style-type: none"> • High Speed Rail
Corridor 5	<ul style="list-style-type: none"> • Commuter Service • Comfort • Amenities • Regional Connections • Express Service 	<ul style="list-style-type: none"> • Bus Rapid Transit / High Intensity Bus 	<ul style="list-style-type: none"> • Bus Rapid Transit/High Intensity Bus



CORRIDOR 6 - DISCUSSION



Pioneer Parkway – SH 303

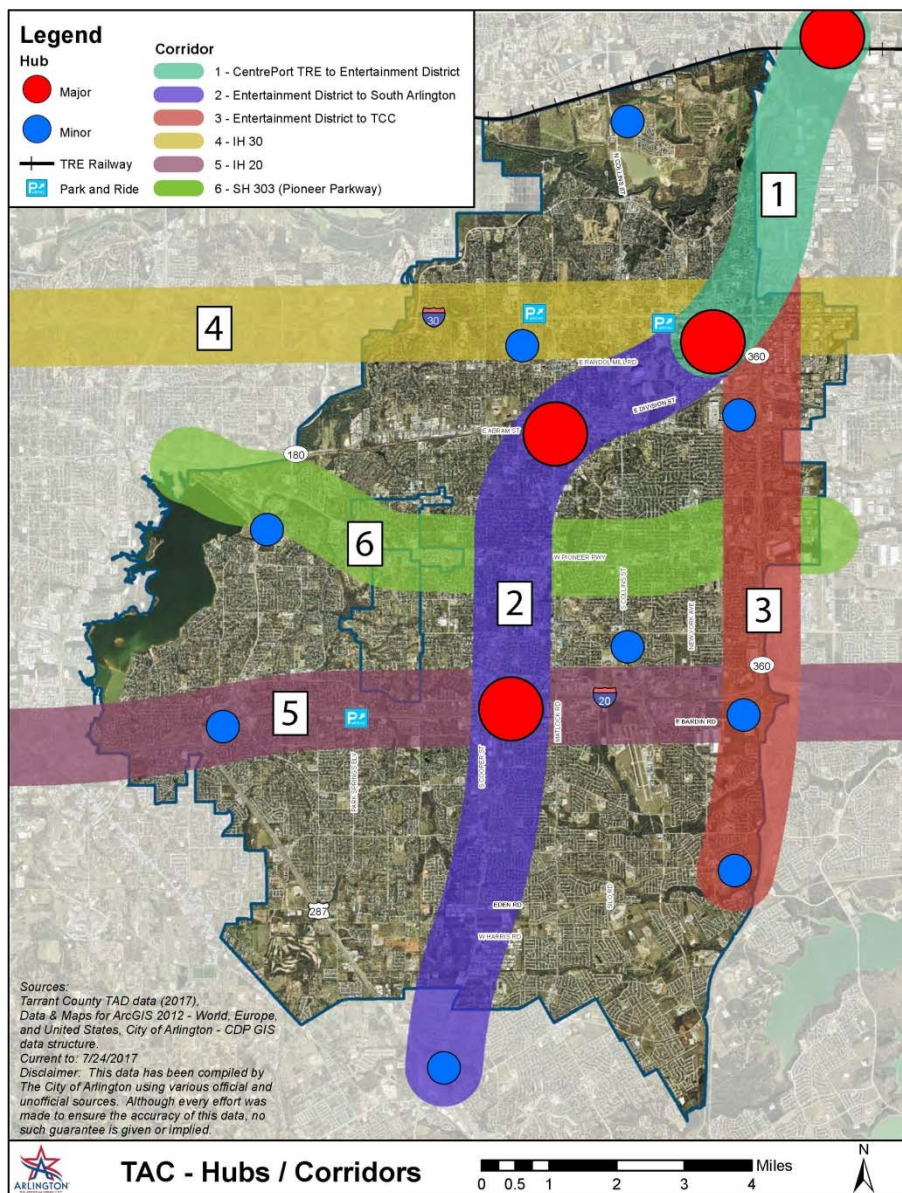
- Characteristics
- Mid-term Recommendation
- Long-term Recommendation

Fixed Guideway Modes:

- Commuter Rail / Light Rail
- Personal Rapid Transit
- Bus Rapid Transit

Flexible Routing:

- Demand Response Rideshare
- Local Bus / Van Service / Trolley
- AV Rubber-tired shuttle
- Ride Hailing Services



CIRCULATORS



Description:

- Short distance, closed loop, regular schedule
- Smaller scale vehicles
- Connects key destinations in a more dense, walkable area
- Facilitate use of perimeter parking lots

Potential Circulators for Discussion:

- Entertainment District
- Downtown
- Parks Mall/Arlington Highlands

Characteristics?



MULTI-MODAL CENTERS



Description

- Place where passengers move between vehicles or transportation modes
- Access to a variety of modes such as trains, buses, circulators, taxis, on-demand transportation, car sharing services, etc.
- May incorporate other non-transportation uses into overall development

Potential Multi-Modal Centers:

- Entertainment District
- Others?



GUIDING PRINCIPLES



- Comprehensive system to serve the entire City
- Flexible, adaptable solution
- Foreseeable, factoring in future growth and technologies
- Phaseable, recommending both mid-term and long-term solutions
- Cost-effective, maximizing potential funding opportunities
- Regional, connecting into existing system and encourage partnerships with neighboring cities
- Long-term transportation vision for the next 20 – 30 years



OTHER POLICY CONSIDERATIONS



- Incorporate innovative/emerging technology
- Support High Speed Rail and design transportation system to coordinate with future High Speed Rail station
- Maximize use of park and rides in development of the system
- Invest in infrastructure improvements to maximize success of system (i.e., sidewalks)
- Integrate City system with the UTA shuttle



PUBLIC PARTICIPATION



- Speaker/Comment Cards available
 - Speakers will be called by name
 - Provide name and address
 - 3 minutes per speaker
 - Please address the Committee
-
- Other Ways to Stay Involved:
 - Visit the website: www.arlington-tx.gov/TAC
 - Join our Interested Parties email list
 - Email us at: TAC@arlingtontx.gov



LAST MEETING



- September 7, 2017
 - 6:00 p.m. – 8:00 p.m.
 - 3rd floor, City Hall
-
- September 26th – Present recommendation to City Council (TAC encouraged to attend)



CONTACT US



www.arlington-tx.gov/tac

Email us at: TAC@arlingtontx.gov

